

# **CONTROLLED, DOUBLE-BLIND, RANDOMIZED CLINICAL TRIAL TO EVALUATE THE IMPACT OF FRUIT JUICE CONSUMPTION ON THE EVOLUTION OF INFANTS WITH ACUTE DIARRHEA.**

Sandra Valois, RD, Hugo Costa-Ribeiro, Jr, MD, Ângela Mattos, MD, Tereza Cristina Ribeiro, MD, Carlos Maurício Mendes, MD and Fima Lifshitz, MD\*.

From: Hospital Professor Edgar Santos, Universidade Federal Da Bahia, Salvador, Bahia, Brazil

\* Sansum Medical Research Institute, Santa Barbara CA, USA

## **ABSTRACT**

In order to assess the effects of juice feedings during acute diarrhea a double-blind, randomized study was performed in 90 children, mean age of  $10 \pm 4.28$  months. Thirty patients with acute diarrhea were fed twice-daily 15 ml/kg of Apple Juice (AJ), 30 received White Grape Juice (WGJ), and 30 were given colored and flavored water (WA) as part of their age appropriate dietary intake. The duration and severity of diarrhea were the main endpoint variables of the study performed in a metabolic unit. The patients were similar among the 3 groups, had diarrhea for 50-64 hours prior to admission, and were dehydrated when admitted to the unit for study. Half of the patients in each group were well nourished and the others had mild to moderate degrees of malnutrition. Rotavirus infection was the agent causing the illness in 63% of the patients. The infants fed juice ingested 14-17% more calories than those given WA, (AJ and WGJ ingested 95 and 98 Calories/Kg/d respectively) whereas those receiving WA consumed 81 cal/kg/d). The increased energy intake was not at the expense of other foods or milk formula. The mean body weight gain was greater among patients receiving WGJ (plus 50.7 gm) as compared with the patients in the AJ group (plus 18.3 gm) or the patients fed WA (minus 0.7 gm) ( $p=0.08$ ). The duration of the illness was longer in the infants fed juice as compared with those given WA ( $p=0.006$ ), the mean  $\pm$  SD duration in hours was  $49.4 \pm 32.6$ ,  $47.5 \pm 38.9$  and  $26.5 \pm 27.4$  in patients fed AJ, WGJ and WA respectively. All patients improved while ingesting juice and none of them developed persistent diarrhea; most recovered within 50 hours of the beginning of treatment and less than one fourth had diarrhea longer than 96 hours in the unit. The fecal losses were also increased among the juice fed patients ( $p = 0.001$ ); the mean $\pm$  SD fecal excretion in g/kg/h was  $3.94 \pm 2.35$ ,  $3.59 \pm 2.35$ , and  $2.19 \pm 1.63$  in each group respectively. The stool output was highest during the first day of treatment among all the patients, though those fed AJ had the highest volume of fecal losses and those who received WA had the lowest stool excretion. After the first day of treatment the differences in fecal excretion were not significant. The ability to tolerate carbohydrates during the illness and immediately after recovery was similar among the 3 groups of patients. Intake of juices with different fructose/glucose ratios and osmolarities resulted in more fecal losses and more prolonged diarrhea as compared with water feedings, but the patients given juice ingested more calories and gained more weight, particularly among those being fed the juice with equimolar concentrations of fructose and glucose.

## **ACKNOWLEDGEMENTS:**

Supported in part by Welch's Inc. and Pediatric Sunshine Academics Inc.

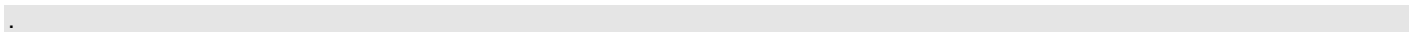
## INTRODUCTION

Worldwide, acute diarrhea represents one of the leading causes of death in children less than 5 years of age. The average duration of an acute episode of this illness is 5 days, but in some cases the diarrhea may persist more than 14 days. This leads to deterioration of the nutritional status and of the prognosis of the disease. Whereas 0.7% of acute diarrhea cases may be fatal, mortality may be 10 to 35% in the persistent diarrhea patients (1). Previous studies have demonstrated that proper management of hydration and appropriate dietary intake during the illness can decrease the stool output, reduce the risk of prolonged diarrhea, and improve the nutritional status of patients (1, 2, 3).

The World Health Organization (WHO) has recommended home fluids, including fruit juices, as appropriate feedings and as a measure to improve fluid balance during acute diarrheal episodes in children (1). On the other hand the Provisional Committee on Quality Improvement, Subcommittee on Acute Gastroenteritis and the Committee On Nutrition of the American Academy of Pediatrics recommended that the management of diarrheal disease in young children should include early feedings of age appropriate foods, while avoiding foods high in fat and feedings with simple sugars, including teas, juices and soft drinks (4, 5). ESPGHAN's working group on acute diarrhea endorsed similar recommendations. They recommended the use of a normal diet without restrictions, including lactose (3).

However, the recommendations for or against juice feedings during acute diarrhea have not been prospectively assessed. Previous data showed that not all fruit juices are equally absorbed. Some juices, like pear (PJ) and apple juice (AJ), which contain more fructose than glucose and sorbitol, are poorly absorbed as compared with white grape juice (WGJ) which contains equimolar concentrations of fructose and glucose, without sorbitol. We recently demonstrated that children challenged with a single serving of PJ or AJ during the recovery phase of diarrhea presented recurrence of loose stools, whereas those who received WGJ did not (6). In other reports it has been shown that apple juice ingestion may be associated with chronic diarrhea (7).

In this double blind randomized clinical trial we measured the effects of juice intake during acute diarrheal illness. AJ, WGJ, and Water feedings were given twice daily as part of an age appropriate dietary intake. While feedings of juice increased the stool losses and the duration of diarrhea, juice intake also contributed to a higher energy intake and increased weight gain, particularly among those fed the juice containing equimolar quantities of fructose and glucose.



## **PATIENTS AND METHODS:**

The study was conducted in a double-blind design. There were 90 infants with severe diarrhea admitted to the Fima Lifshitz Metabolic Unit at The University Hospital Professor Edgar Santos, Federal University of Bahia, Salvador, Bahia, Brazil. Thirty patients in each group were randomly assigned to receive one of three juice feedings: apple juice (AJ), white grape juice (WGJ) or water (WA). The composition of each one of them is shown in table 1. These were packaged by the manufacturer (Welch in Concord MA) in identical bottles and were of the same appearance and color. The WA was colored and flavored to resemble juice. Thirty identically labeled bottles containing 300 ml each were provided per patient. A new bottle was opened for each of the twice daily feedings. The investigators involved with the care of the patients in the study were not aware of the code identifying the bottle content or of the type of juice that the infant was randomized to be fed. To establish the randomization list, permuted blocks of variable length, with four blocks for each group, were used in order to avoid imbalance between treatment groups.

The patients fulfilled the following inclusion criteria: male, age 4 to 18 months, had an episode of acute diarrhea (defined as more than 3 watery stools in the previous 24 hours and of no more than 3 days duration prior to admission) and were moderately dehydrated. Patients presenting severe dehydration or other conditions or concurrent serious illness, and history of chronic diarrhea as well as those exclusively breast fed prior to the time of the illness were excluded from the study. An informed consent was elicited from the mothers of all patients admitted into the protocol. The study was approved by the Institutional review Board of the Hospital and of the University.

The patients were hydrated according WHO guidelines. They were treated with ORS given at a dose of 100ml/kg over 6 hr. The maintenance hydration phase started once the acute dehydration was treated. This was continued throughout the duration of the illness. During this phase the patients received ORS solution on a volume to weight replacement of ongoing stool losses and vomit. After rehydration was achieved, the infants were started on their usual diet that consisted of age appropriate milk formula and feedings and complementary foods (8). Additionally, all infants received a serving of 15 ml/kg of AJ, WGJ, or WA, twice daily (10 AM and 3 PM) throughout the diarrheal episode. Plain water was offered "ad libitum" between meals. Lactose free formula was utilized in two patients who had severe stool losses >10ml/kg/hr during their milk formula feedings.

A Breath Hydrogen Test was performed twenty-four hours after the illness improved, defined as two formed stools passed during 24 hrs., or no stools for 12 h.s. The patients were kept fasted for 6 hours and a juice feeding was given. Breath Hydrogen levels were measured every 30 minutes for 3 hours using a SC Microanalyzer (Quintron Instruments Co). A peak rise in H<sub>2</sub> of at least 20 ppm was considered as a positive response (9).

Body weight was measured on admission, after rehydration, and daily thereafter until discharge. Nutritional assessment was determined using weigh-for-length with National Center for

Health Statistics (NCHS) data as reference. Nutritional intake and the amount of fluids ingested were measured throughout the study. Stool weight, Urine volume, and Vomitus weight were quantitated using metabolic techniques and specially designed beds to accurately collect stool losses throughout the study. Breast milk intake was estimated by weighting the patients before and after breastfeeding. All stools were tested for pH and sugars by Clinitest tablets. Standard laboratory techniques were used for measurement of serum sodium, potassium and hemoglobin and hematocrit on admission, at 24 hours after the initiation of the study and as clinically indicated afterwards. Stool cultures for pathogens and rotavirus by ELISA were performed on admission. All patients were requested to return after one week for outpatient's clinics follow-up. At this visit clinical evolution of each patient were recorded.

The following endpoint variables were quantified: duration of the illness, severity of diarrhea assessed by the number, type and consistency of the stools and the amounts of fecal losses measured as g/kg/day. Vomitus losses were also quantitated. The amount of fluid intake required to maintain fluid balance was also determined. Body weight changes were measured utilizing the weight of the patient attained after rehydration as compared with the one prior to discharge. The presence of carbohydrate intolerance was determined by the fecal pH and sugar excretion as well as by the breath hydrogen levels after juice intake.

The sample size was calculated by the Power program to ensure statistically significant differences on the stool output and duration of diarrhea (10). The estimated sample size was 26 patients per group assuming a 30% clinical improvement, on the above outcomes, at a power of 80% at 0.05 significance. Data were analyzed by Analysis of Variance (ANOVA), when data distribution were not normal, a non-parametric test of Kruskal-Wallis were performed. Survival curves Kaplan-Meyers were used when appropriated (11).

## **RESULTS**

The clinical characteristics and the laboratory data of the patients on admission are shown in tables 2 and 3. The patients in each of the 3 groups were similar in age, duration and severity of diarrhea, presence of fever and vomiting. Also there were no differences in the proportion of patients who received breast feedings or in their nutritional status. Over forty six percent of patients studied in each group, were well nourished, more than 33% showed mild body weight deficits (<1 SD) and the others had mild to moderate malnutrition (>2 SD). All patients presented some dehydration (mild to moderate), and required no intravenous hydration therapy. Differences in clinical characteristics were not significant among groups.

The serum electrolyte levels on admission to the hospital were similar among the 3 groups of patients (Table 3). The hemoglobin and hematocrit levels were also similar among groups, but two thirds of the patients exhibited mild degrees of anemia (Hb < 11gr), and in 9 infants there was a more severe degree (Hb < 9 gr). In all instances iron supplementation was prescribed at the completion of the study. Rotavirus was identified in the stools of 55 of the patients, in 4 there was a pathogenic Escherichia Coli, in 10 there were parasites detected, and in the remaining 21 infants there were no stool pathogens identified.

The daily intake of the patients while in the study is shown in table 4. The amount of water, milk formula, and breast milk feedings did not differ among the groups. However, the infants given WGJ readily consumed more juice than those fed AJ or WA. The total energy intake was higher in the juice fed groups as compared with the WA one. The WGJ patients ingested an average of 17% more calories on a daily basis, and the AJ infants consumed a mean of 14% more than the WA group. The increased energy intake was not at the expense of the other foods; both milk formula and complementary foods were ingested in similar quantities among the 3 groups of patients. The mean body weight gain was also higher among the juice fed patients; there was a mean weight gain of 18.3 gm in the AJ fed patients and of 50.6 gm in those given WGJ, whereas there was a mean loss of body weight (minus 7,0 gm) among the WA group patients ( $p=0,08$ ).

The duration of diarrhea differed among the 3 groups of patients (Table 5). The total duration of diarrhea from the start of the illness through their recovery was decreased among the WA fed patients as compared with the AJ and WGJ groups  $111.7 \pm 48.2$ ,  $105.4 \pm 44.9$  and  $80.0 \pm 39.6$  hours in AJ, WGJ and WA respectively. The differences in the duration of diarrhea were more marked while being treated in the hospital, the illness being shorter among patients given water instead of juice. However the majority of the patients recovered promptly regardless of the treatment given (Figure 1). Most of the patients improved within 50 hours after treatment was instituted, less than one fourth of them had diarrhea persisting more than 96 hours and no one had it for more than 7 days.

The severity of diarrhea also differed among the treatment groups (Table 6). The stool output among the WA group of patients was significantly decreased as compared with those fed juice. During the first day of treatment those fed water had a mean stool output of 40% less than those fed juice. With improvement the differences among the treatments were minimized, and were no longer significant after the 2<sup>nd</sup> day of the illness. There were also significant differences in the severity of diarrhea among AJ and WGJ feedings (Table 6). During the first 24 hours of treatment of the illness the patients receiving AJ had more marked stool losses than those fed WGJ. The mean excretion of stools was 21% higher in AJ fed patients than in the WGJ fed group.

The stool excretion data was treated for possible confounding and co-variables which could play a role in determining the final results. The covariance analysis and the robust regression showed a possible influence of ORS intake in the differences detected among the 3 groups of patients. The stool output was not different when the ORS intake was adjusted for the

3 groups of patients and the urinary outputs were also similar. Vomitus losses were not different among the 3 groups of patients, vomiting being present primarily during the first 24hrs. of treatment.

There were 2 patients who had severe diarrhea during the treatment period (>10ml/kg/hr). These patients were in the AJ group, one of these patients had acid stools and none had carbohydrates in feces. These 2 patients were treated with a lactose free formula, with improvement in stool output. There were three other patients who showed carbohydrate intolerance with acid stools or sugars in feces among the 3 groups, they improved without any dietary modifications.

Vomiting was present in all groups of patients: 22 (AJ), 26 (WGJ), and 19 (WA) during the first day of treatment; nevertheless this did not represent a limitation for Oral Rehydration Therapy (ORT) or feeding regimen and no patient was withdrawn or shifted to another therapy due to vomiting.

The response to juice feedings, as determined by breath hydrogen excretion after improvement of the illness, was not different among the 3 groups of patients. Most infants did not show breath Hydrogen excretion levels above 20 ppm; and there were 17, 16 and 10 patients among the AJ, WGJ and WA groups respectively, who failed to show BH<sub>2</sub> levels above 5 ppm at any time. Only 18 patients demonstrated a delta BH<sub>2</sub> level increase above the basal value of more than 20ppm. Eight of them were given AJ, 6 were fed WGJ and 4 received WA. There were 11, 16, and 13 patients in each group who exhibited a BH<sub>2</sub> value above 20 ppm independent of the delta differences from basal among the WGJ, AJ and WA fed groups respectively. The differences in BH<sub>2</sub> levels among groups were not significant.

## **DISCUSSION**

This is the first double blind prospective study designed to evaluate the effects of fruit juice feedings during diarrheal disease in young children. Two commonly available juices were selected and compared with water intake, as part of an age appropriate dietary intake. One juice contained equimolar quantities of glucose and fructose (WGJ) and the other one provided a higher fructose to glucose ratio and contained sorbitol (AJ). All patients improved while being fed water or any of these 2 juices. However those receiving juice had more stool losses than those fed water, highest being among the patients fed AJ. This was a significant finding during the first day of treatment, not thereafter. On the other hand the children fed juice ingested more calories and gained more weight than those fed water, those fed WGJ having the best response.

Acute gastroenteritis continues to be a common illness among infants and children worldwide. The disease causes an estimated 2 million deaths annually among children in the developing world. In the United States diarrhea accounts for more than 1.5 million outpatient visits, 200,000 hospitalizations and 300 deaths per year (12). Children younger than 5 years of age are at much higher risk of death from diarrhea than older children and adults (13). Infants younger than one year of age are particularly susceptible to this disease and are at the highest risk of death, 43% to 78% of mortalities from the illness among children less than 5 years of age occur in infants less than one year (13, 14, 15).

Although the number of children currently dying from diarrhea continues to be unacceptably high, it is substantially lower than the 5 million deaths estimated 20 years ago (16). The critical factors accounting for the reduction in mortality rates from this illness include widespread use of oral hydration solutions and the proper nutritional rehabilitation of sick infants (17).

The American Academy of Pediatrics has emphasized the importance of oral hydration and early nutritional support to aid these patients safely and effectively through the diarrheal episode (5). A rapid realimentation with age appropriated foods and an unrestricted diet is recommended, as soon as dehydration is corrected. Nursing should be continued for those infants being breast fed and a standard full strength formula to be given to those formula fed children. The old concept of "Bowel Rest" has no scientific validity and it can serve to aggravate and increase the risks of the disease (18). Apart from the undesirable metabolic effects of even brief fasts, withholding oral intake may further compound the intestinal absorptive processes and may lead to deterioration of the nutritional status of the patient (19). Even though feedings increase the stool output and diarrhea, children who are fed attain higher body weights at the end of the illness than children who are not fed. This was evident in this study. Patients who were fed juice as part of the nutritional intake during the diarrheal illness had a higher body weight at recovery than those fed water, although they exhibited larger stool losses during the first 24 hours of nutritional rehabilitation.

Diarrhea, like other infections, decreases the appetite and sick infants often reject most foods, although breast milk is better accepted (20). The lack of appetite may be mediated by interleukin 1, a hormone released by the white cells after infection (21). The intensity of anorexia may not necessarily correlate with the severity of the illness. A child may lose his or her appetite with even mild diarrhea, with anorexia lasting from a few hours to several days (22). As much as 20% to 70% of food available may be wasted or not eaten, during bouts of diarrhea (22). Thus feedings of a well accepted available energy source might be desirable and necessary to enhance the nutrient intake of sick infants and young children. The patients in this study readily consumed fruit juice, and the intake of this food did not displace the consumption of other nutrients. Juice feedings resulted in a higher energy balance, particularly among the infants fed WGJ. Infants fed juice ingested 14-17% more calories than those given WA, AJ and WGJ ingested 95 and 98 calories/kg/d respectively, whereas those receiving WA consumed 81 calories/kg/d.

Previews data showed that fruit juices differ in carbohydrate composition and that juices containing equimolar concentrations of glucose and fructose were best absorbed throughout the first 5 years of life (7, 23). Similarly we have previously shown that this type of juice is better tolerated after recovery from acute diarrhea (6). The present study confirmed that this juice was better suited during the acute stages of the illness. The fecal losses associated with consumption of WGJ juice during the treatment of acute diarrhea were lower than those observed during feedings of juice containing higher fructose to glucose ratios and sorbitol. However, the stool output was highest only during the first day of treatment, with differences in stool output rapidly disappearing with recovery from the illness. All patients improved within 3-4 days while ingesting juice and none of them developed persistent diarrhea. The ability to tolerate carbohydrates was also similar among the 3 groups of patients.

The patients were given ad libitum up to 15ml/kg/dose of juice twice daily throughout the study. This dose of juice exceeded the recommended allowance by the AAP-CON (4) which limits the intake of juice to one serving of 4-6 oz per day to children of this age. However by allowing the patients to ingest ad libitum the high energy drink during the illness, they did not consume the full amount of juice offered, they only ingested approximately 17 to 21 ml/kg/day, those receiving WA consuming the lesser amounts. The patients given juice feedings also ingested more fluids. One can speculate that fluid intake was higher due to fecal losses replacement and/or thirst induced by juice. A covariance analysis and a robust regression to determine a possible confounding factor did not support that possibility. No differences were found among groups by adjusting the stool output to ORS or fluid intake. However, the ORS volume represented the most important fluid intake, indicating that diarrhea duration and stool losses were the consequence of this finding.

The maintenance of a positive energy balance during the illness may be of particular importance for the vulnerable infant who is at a higher nutritional risk even before developing diarrhea (19, 22). This illness is considered to be one of the most important risks for the development of malnutrition (24). Diarrhea and other infections affects the body's economy through a number of mechanisms including the decreased absorption of nutrients (22, 24, 25). The provision of simple carbohydrates in a balanced proportion, as present in some juices, may facilitate energy balance even during the illness and may be positive for the infant's nutritional rehabilitation (6). The ingestion of juice during the acute episode of diarrhea provided a higher average energy intake than that of those fed WA (plus 12 cal/kg/day for AJ and 18 cal/kg/day for WGJ). However ingestion of larger amounts of fruit juice has been associated with prolongation of diarrhea (7). Additionally ingestion of juices containing high fructose and sorbitol may also be associated with other negative consequences, i.e. colic (26) and increase energy requirements (27).

The transient malabsorption during the acute phase of the illness may be overcome by absorptive advantages of the carbohydrate composition of specific feedings (6). Similar results were found with amino-acid based ORS (28) and with the low-osmolality ORS (16, 29, 30), though there was a negative role of high osmolality solutions. However the most important therapy for the sick infant is the rapid rehydration, the maintenance of fluid and electrolyte balance and the provision of adequate feedings.

## **CONCLUSION**

Feedings of juices with different fructose/glucose ratio, with or without sorbitol and osmolality levels resulted in more fecal losses in the first 24 hours of diarrhea as compared with water feedings. However the patients given juice ingested more calories and gained more weight, particularly those being fed the juice with equimolar concentrations of fructose and glucose without sorbitol. All patients recovered with appropriate treatment without any one developing persistent diarrhea. Our data strongly support the present recommendation of maintaining normal dietary habits during acute diarrheal episodes. However, juice choices may vary in its effects, as they

vary in their composition; thus these differences should be considered when recommendations are made for feeding sick infants.

**TABLE 1 - Carbohydrate Content of Fruit Juices**

Juice	Osmolality mOsm/L	Fructose gm/dl	Glucose gm/dll	Sucrose gm/dl	Sorbitol gm/dl	Energy cal/dl
Apple	700	6.2	2.7	1.2	0.5	40.4
White Grape	1040	7.5	7.1	0.0	0.0	58.4
Water	46	--	--	--	--	--

Modified from:

Hyams JS, Etienne NL, Leichtner AM, Theuer RC, Carbohydrate malabsorption following fruit juice ingestion in young children. *Pediatrics* 1988;82:64-8. Hardinge MG, Swarner JS, Crooks H. Carbohydrate in foods. *J AM Diet Assoc* 1965;46:197-204

**TABLE 2 - Clinical Characteristics of Patients on Admission**

	Apple Juice n = 30		White Grape Juice n = 30		Water n= 30	
	$\chi$	SD	$\chi$	SD	$\chi$	SD
Age (months)	10.27 4.75		10.27 4.14		11.09 4.00	
Diarrhea Duration (hr)	56.37 33.90		64.17 38.95		53.47 33.35	
Fever Duration (hr)	37.77 33.46		47.11 49.62		41.04 38.11	
Vomiting (h)	41.57 35.45		46.97 39.54		44.33 31.44	
Breastfeeding	13 (n) 43.3%		16 (n) 53.3%		09 (n) 30.0 %	
Well Nourished	16 (n) 53.3%		15 (n) 50.0%		14 (n) 46.6%	
Nutritional Risk**	08(n) 26,6%		10(n) 33.3%		15(n) 50.0%	
Mild Malnutrition	03 (n) 10.0%		05(n) 16.6%		01(n) 3.4%	
Moderate/Severe Malnutrition	03(n) 10.0%		00(n) 0.0%		00(n) 0.0%	

There were no statistically significant differences among groups, Analysis of Variance (ANOVA)  $p > 0.05$ . Fever was considered above 37.5 C temperature. Nutritional risk indicated body weight deficit  $< 1$  SD, Mild malnutrition  $< 2$  SD and Moderate/Severe Malnutrition  $> 2$  SD. n= number of patients and % of patients in each category.

**TABLE 3 - Laboratory Data of Patients on Admission\***

	Apple Juice n = 30		White Grape Juice n = 30		Water n = 30	
	$\bar{x}$	SD	$\bar{x}$	SD	$\bar{x}$	SD
Serum Sodium (mEq/l)	142.03	5.45	140.96	3.51	140.51	5.39
Serum Potassium (mEq/l)	3.99	0.59	3.95	0.81	4.27	0.78
Hematocrit (%)	31.17	3.29	30.93	2.50	32.03	3.55
Hemoglobin (g/dl)	10.28	1.13	10.24	0.87	10.58	1.19
No Anemia	06(n)	20.0 %	02(n)	6.7 %	07(n)	23.3 %
Mild Anemia †	20(n)	66.7 %	26(n)	86.6%	20(n)	66.7 %
Severe Anemia †	04(n)	13.3 %	02(n)	6.7 %	03(n)	10.0 %
Rotavirus	19(n)	63.3 %	18(n)	60.0 %	18(n)	60.0 %
Parasites ††	05(n)	16.7%.	04(n)	13.3 %	01(n)	3.3 %

\*There were no significant differences among groups by ANOVA  $p > 0.05$ .

†The criteria for mild Anemia was a hemoglobin less than 11.0 g/dl and for severe anemia was a hemoglobin less than 9 g/dl (WHO, 1989)

††The parasites detected were: *Ascaris lumbricoides* (4), *Giardia lamblia* (1) *Blastocystis hominis* (1) *Entamoeba coli* (1) and *Cryptosporidium parvum* (3).

n= number of patients and % of patients in each category

**TABLE 4 - Daily intake of patients throughout the study (Kcal/Kg/day)**

	Apple Juice n = 30		White Grape Juice n = 30		Water n = 30		P value
	$\bar{x}$	SD	$\bar{x}$	SD	$\bar{x}$	SD	
Total Calories	95.84	22.42	98.65	30.52	81.43	23.09	0.02*
Milk Formula	54.49	23.43	50.21	34.57	52.68	17.93	0.81
Breast Milk	08.71	11.57	15.80	18.56	05.45	10.96	0.06
Water	30.67	9.25	30.27	09.57	26.98	9.37	0.25
ORS	45.52	31.17	39.12	25.10	25.10	17.91	0.01**
“Juices”	18.61	3.93	20.98	5.35	17.32 <sup>x</sup>	4.37	0.01***
Total Liquids	157.90	38.26	158.42	50.35	127.70	28.25	0.001****
Complementary Foods	23.90	11.61	25.12	13.97	26.92	11.59	0.64

\* Significant differences for Juice Groups vs Water, by ANOVA (Bonferroni)

\*\* Significant differences for Water vs both juice groups

\*\*\* Significant differences for WGJ vs each other group

\*\*\*\* Significant Differences for Water vs each other group

<sup>x</sup> Colored flavored water to resemble juice

Data are means +/- SD

**TABLE 5 - Duration of diarrhea in hours after randomization.**

<b>Duration of diarrhea</b>		
	<b>Mean</b>	<b>SD</b>
Apple Juice	49.4	32.6
White Grape Juice	47.5	38.9
Water *	26.5	27.4

\*Significant differences detect by Kruskal-Wallis  $p < 0,05$ . Water vs Juice groups.  
Data are hours +/- SD

**TABLE 6 - Fecal losses throughout the study and on the first day after randomization**

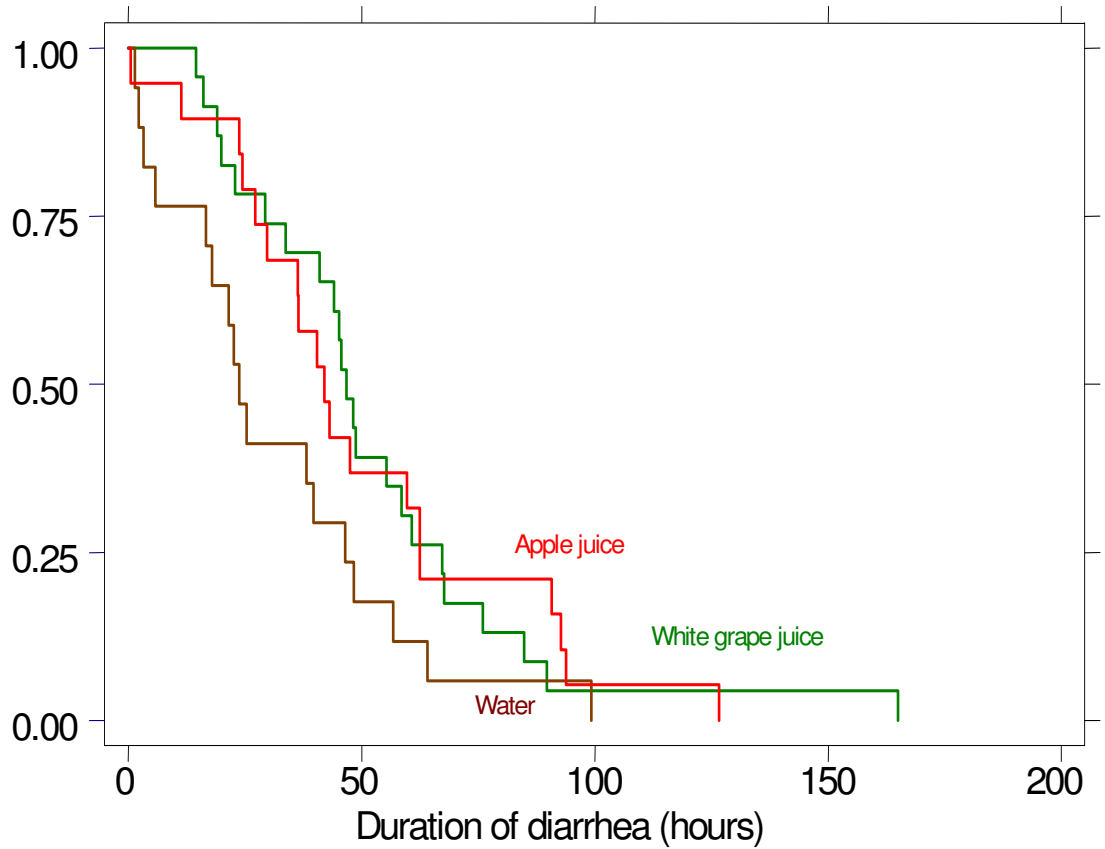
	<b>Total Losses (g/kg/hr)</b>		<b>First Day Losses g/kg/hr</b>	
	<b>Mean</b>	<b>SD</b>	<b>Mean</b>	<b>SD</b>
Apple Juice	3.94	2.35	4.13**	2.90
White Grape Juice	3.59	2.35	3.28**	2.39
Water	2.19*	1.63	1.78***	1.80

\*Differences Among groups Water vs each of the juice groups (Kruskal-Wallis test) ( $p= 0,001$ )

\*\* Differences between WGJ and AJ ( $p=0,02$ )

\*\*\* Differences between Water and each of the juice groups ( $p=0,001$ )

Figure I: Survival analysis of total of diarrhea - Kaplan-Meier, per group \*



\* Statistic difference were found,  $p < 0,05$ , among water group and apple juice ( $P = 0,03$ ) or white grape juice ( $P = 0,00$ ).

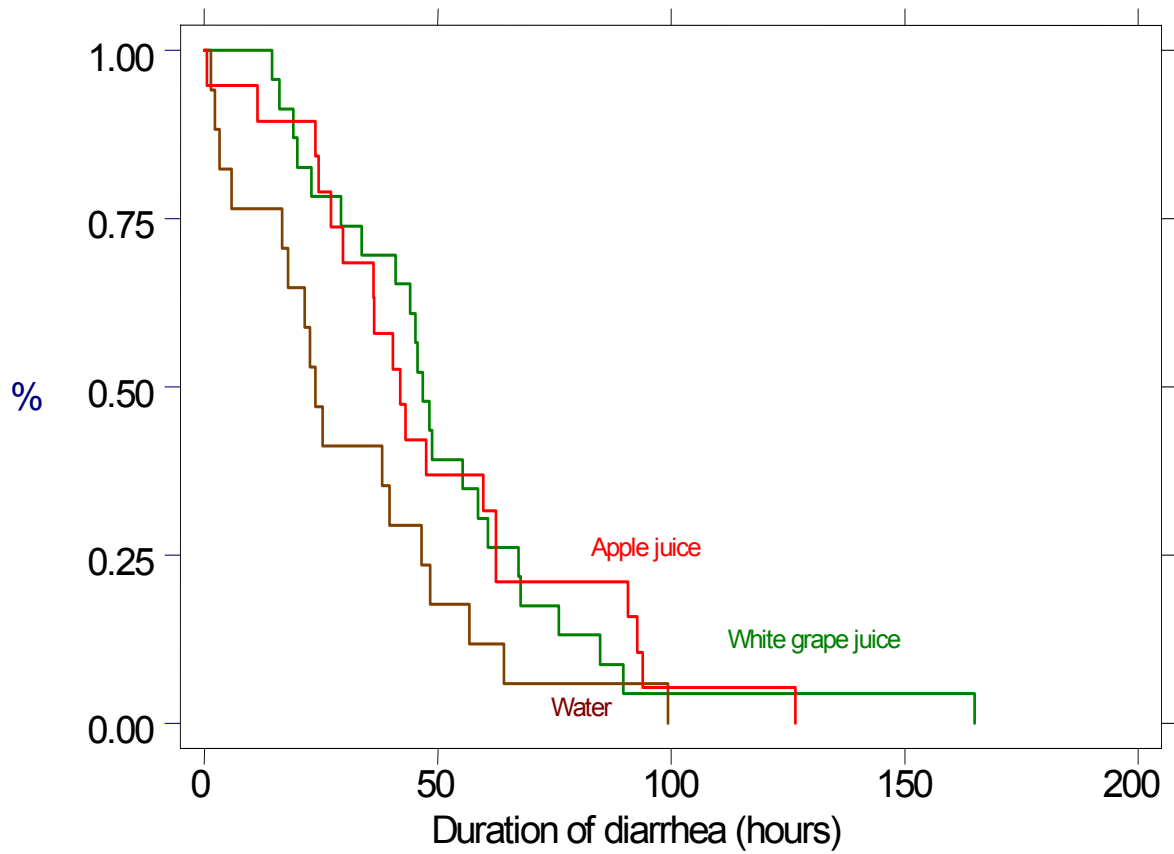
## Bibliographic References

1. World Health Organization. Programme for the control of diarrheal diseases. *A manual for the treatment of diarrhoea*. Ver. 2. Washington (DC): WHO/CDD/SER/80; 1990.
2. Brown KB, Gastanaduy AS. Effect of continued oral feeding on clinical and nutritional out-comes of acute diarrhea in children. *J Pediatr*, 112: 191-200, 1998.
3. The Working Center Group on Acute Diarrhea of the European Society for Pediatric Gastroenterology, Hepatology and Nutrition. Management of acute gastroenteritis in Europe and the impact of the new recommendations: a multicenter study. The Working Center Group on Acute Diarrhea of the European Society for Pediatric Gastroenterology, Hepatology and Nutrition. *J Pediatr Gastroenterol Nutr* 30:522-7, 2000.
4. American Academy of Pediatrics. Provisional Committee on Quality Improvement. Subcommittee on Acute Gastroenteritis. Practice parameter: the management of acute gastroenteritis in young children. *Pediatrics*, 97:424-36, 1996.
5. American Academy of Pediatrics. Academy endorses CDC gastroenteritis guidelines. *Sheth AAP News* 25: 99, 2004.
6. Ribeiro H, Ribeiro TC, Valois S, Mattos A, Lifshitz F. Incomplete carbohydrate absorption from fruit juice consumption after acute diarrhea. *J Pediatr*, 139(2):325-7, 2001.
7. Lifshitz F. Role of Juice Carbohydrate Malabsorption in Chronic Nonspecific Diarrhea in Children. *J Pediatr*, 120:825-29,1993.
8. OPAS/OMS – Organizacion Panamericana de La salud / Organizacion Mundial de la salud. *Nutrición y alimentación del niño em los primeiros años de vida*. Washington, DC, EUA, OMS/OPAS, 163-76, 1997.
9. Perman JB, Barr RG, Watkins JB. Sucrose malabsorption in children: Non-invasive diagnosis by interval breath hydrogen determination. *J Pediatr*, 93:17-22, 1978.
10. Erdfelder E, Faul F, Buchner A. G Power: A general power analysis program behavior. *Research Methods, Instruments & Computers*, 28:1-11, 1996.
11. Center for Disease Control and prevention (CDC), USA. WHO Geneve, Switzerland. Epi Info 6.04d: A world processing database and statistic program for public health. 2001.

12. King CK, Glass R, Bresee JS, Duggan C. Managing acute gastroenteritis among children: oral rehydration, maintenance and nutritional therapy. *MMWR Recomm Rep* 52(RR -16):1-16, 2003.
13. Fikree FF, Azam SI, Berendes HW. Time to focus child survival programmes on the newborn: assessment of levels and causes of infant mortality in rural Pakistan. *Bull World Health Organ* 80(4): 271-76, 2002.
14. Baqui AH, Sabir AA, Begum N, Arifeen SE, Mitra SN, Black RE. Causes of childhood deaths in Bangladesh: an update. *Acta Paediatr* 90(6): 682-90, 2001.
15. Shamebo D, Muhe L, Sandstrom A, Wall S. The Butajira rural health project in Ethiopia : mortality pattern of the under fives. *Trop Pediatr* 37(5): 254-61, 1991.
16. Choice Group. Efficacy and safety of oral rehydration solution with reduced osmolarity in adults with cholera: a randomised double blind clinical trial. *Lancet*, 354:296-9, 1999.
17. Lifshitz F. Management of acute diarrheal disease. *J Pediatr* 118: S25 – 26, 1991.
18. Bhan MK. Current concepts in management of acute diarrhea. *Indian Pediatr*, 40(5): 463-76, 2003.
19. Meier R, Burri E, Stemerwald M. The hole of nutrition in diarrhea syndromes. *Curr Opin Clin Nutr Meta Care* 6(5): 563 -7, 2003.
20. Bhandari N, Bahl R, Mazumder S, Martinez J, Black RE, Bhan MK. Effect of community-based promotion of exclusive breast-feeding on diarrhoeal illness and growth: a cluster randomized controlled trial. *Lancet*, 361(9367):1418-23, 2003.
21. Rothwell NJ, Luheshi GN. Interleukin 1 in the brain: biology, pathology and therapeutic target. *Trends Neurosci* 23(12):618-25, 2000.
22. Gracey M. Nutritional effects and management of diarrhea in infants. *Acta Paediatr Suppl* 88(430): 110-26, 1999.
23. Nobrigot T, Chasalow FI, Lifshitz F. "Carbohydrate absorption from one serving of fruit juice in young children: age and carbohydrate composition effects". *J Am Coll Nutr*, 16: 152-58, 1997.
24. Patwari AK. Diarrhoea and malnutrition interaction. *Indian J Pediatr* 66(1 Suppl):S124-34, 1999.
25. Molla AM, Molla A, Sarker SA, Khanun M. Whole gut transit time and its relationship to absorption of macronutrients during diarrhoea and after recovery. *Scand J Gastroenterol* 18:537-543, 1983.

26. Duro D, Rising R, Cedillo M, Lifshitz F. Association between infantile colic and carbohydrate malabsorption from fruit juices in infancy. *Pediatr*, 109(5):797-805, 2002.
27. Valois S, Rising R, Duro D, Cole C, Cedillo M, Lifshitz F. Carbohydrate malabsorption may increase daily energy requirements in infants. *Nutrition*, 19(10):832-6, 2003.
28. Ribeiro Jr HC, Ribeiro T, Mattos A, Palmeira C, Fernandez D, Sant'ana I, Rodrigues I, Bendicho MT, Fontaine O. Treatment of acute diarrhea with oral rehydration solutions containing glutamine. *J Am Coll Nutr*, 13(3):215-55, 1994.
29. Choice Group. Multicentre evaluation of reduced-osmolarity oral rehydration salts solution. *Lancet*, 345:282-5, 1995.
30. Choice Group. Multicenter, Randomized, Double-Blind Clinical Trial to Evaluate the Efficacy and Safety of a Reduced Osmolarity Oral Rehydration Salts Solution in Children With Acute Watery Diarrhea. *Pediatrics*, 107(4):613-8, 2001.

**Figure 1. Duration of diarrhea –survival analysis Kaplan-Meier**



Statistical differences were found,  $p < 0.05$ , between water fed and apple juice ( $P = 0.03$ ) or white grape juice ( $P = 0.01$ ).